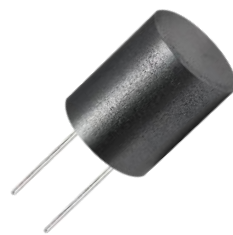


1 Part No. 产品型号

PRS **1214** **—** **100** **M**
① ② ③ ④

- ① Product Type: PRS Series
产品类型
- ② Dimensions: 12.7×15.3mm
外形尺寸
- ③ Inductance: 100 = 10.0μH
电感值
- ④ Inductance Tolerance: M = ±20%
电感值公差

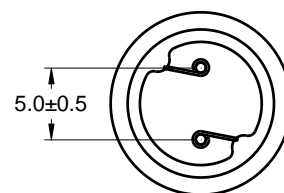
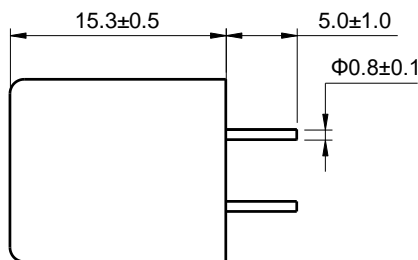
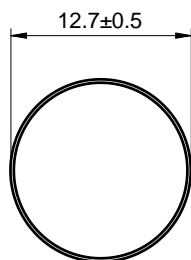
※ Operating temperature: -40°C~+125°C (Including coil's temperature rise)
工作温度(包含线圈发热)



Construction Wire



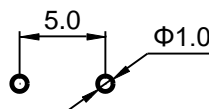
2 Appearance and Dimensions (mm) 外形尺寸(mm)



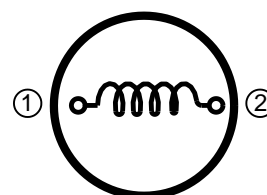
3 Marking 印字标识



4 Reference Hole Pattern (mm) 参考焊孔尺寸 (mm)



5 Schematic 原理图



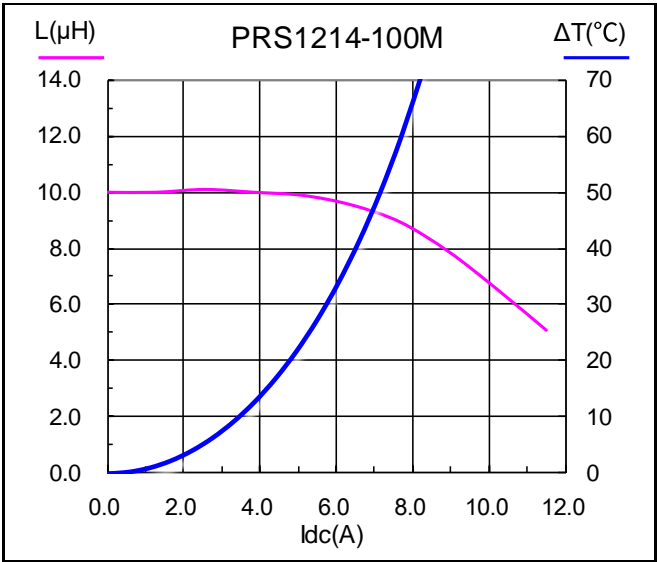
※ Marking is available if needed
如果需要，产品可印字。

6 Electrical Characteristics
电气特性

Part No. 型号	Inductance (μH) 电感值 ※1	D.C.R. (mΩ) 直流电阻		Saturation current (A) 饱和电流 ※2	Temperature rise current (A) 温升电流 ※3
	±20%	Typical	Max	Typical	Typical
PRS1214-100M	10.0	13.0	15.6	6.00	6.40

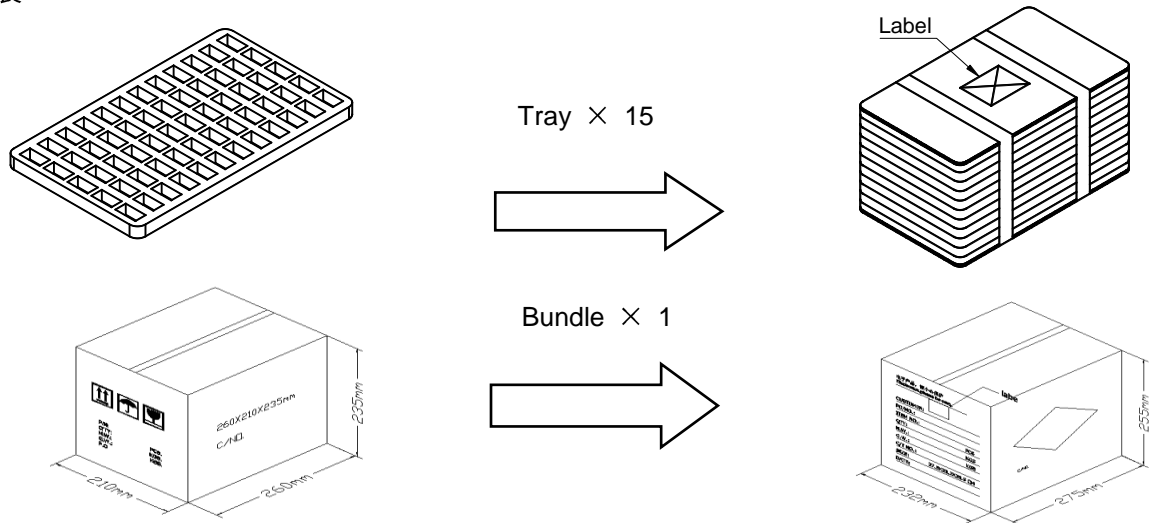
- All data is tested based on 25°C ambient temperature.
所有数据基于环境温度 25°C条件下测试。
- ※1 Inductance measure condition at 100kHz,0.1V.
电感测试条件为 100kHz,0.1V。
- ※2 Saturation current: the actual value of DC current when the inductance decrease 10% of its initial value.
饱和电流：电感值下降其初始值的 10%时所加载的实际直流电流值。
- ※3 Temperature rise current: the actual value of DC current when the temperature rise is ΔT40°C(Ta=25°C).
温升电流：使产品温度上升到 ΔT40°C时所加载的实际直流电流值(Ta=25°C)。
- ※ Special remind: Circuit design, component placement, PCB size and thickness, cooling system and etc. all will affect the product temperature. Please verify the product temperature in the final application.
特别提醒：线路设计，组件布局，印刷线路板(PCB)尺寸及厚度，散热系统等均会影响产品温度。请务必在最终应用时，验证产品发热状况。

7 Saturation Current vs Temperature Rise Current Curve
饱和电流 vs 温升电流曲线



8 Packing specification
包装规格

8.1 Packing
包装



8.2 Carton dimensions and packing quantity
包装箱尺寸和包装数量

- Inner Carton: 260×210×235mm
内包装箱
- Out Carton : 275×232×255mm
外包装箱

Product Series 产品系列	Quantity / Tray 数量 / 盘	Inner Carton Quantity 内盒 包装数量	Out Carton Quantity 外箱 包装总数量
PRS1214	64pcs	(64×15) = 960pcs	(960×1) = 960pcs

8.3 Label Making
标签标识

The following items will be marked on the tray of product label and shipping label.
以下项目将明确标识于产品吸塑盘标签以及运输标签上。

Production Label
产品标签

- Packing No.
包装流水号
- Quantity
数量
- Shipment Date
出货日期
- Part No.
产品型号
- Customer Part No.
客户型号
- Customer Po No.
客户订单号

Shipping Label
运输标签

- Packing No.
包装流水号
- Quantity
数量
- Shipment Date
出货日期
- Part No.
产品型号
- Customer Part No.
客户型号
- Customer Po No.
客户订单号